



# UV flame detector

## **Salwico NS-AUV**

Part no. N11121

System: Salwico CS4000, CS3000\* NSAC-1 fire detection system

### Description

The NS-AUV is an analogue addressable flame detector for Salwico addressable fire alarm systems. It is sensitive to ultraviolet light emitted by flames.

Due to its high sensitivity to UV-light, the detector has a built-in advanced alarm algorithm to avoid false alarms. Thanks to the very wide supervising angle it can cover large areas, and the UV tube is protected by a quartz glass. This flame detector is very suitable for use in harsh environments.

When the detector is in alarm condition, a red LED on the detector will be lit. The LED will be lit until the alarm has been reset at the control panel. The detector can be connected to the fire detection loop by using two different base plates.

The address is set with a DIP switch.

The detector is polarity independent.

An external LED indicator, buzzer etc. can be connected to the remote output.

The polarity of the loop has to be connected according to the drawing below if the remote output is used.

### Installation instruction

Mount the detector so that it has a clear view of the whole area where the flames are expected.

Avoid shadows by e.g. putting another detector in the opposite corner. The detector has a cone of vision of 100° from the central axis.

Place the detector beside, not directly above, the protected object due to the risk that black smoke will block the flames.

Place the detector under an angle of 45° downwards. This way the detector will see both down and forward and catch the least amount of dirt. Avoid having potential false alarm sources such as flames in the cone of vision.

See illustration on the next page for more details.

### Data

Sensor type	UV Tron
Wave length detection	185 – 260 nm
Supervising angle	100°
System voltage	24 V DC
Operation voltage	15 – 35 V DC
Operating current	
- supervising/alarm	0.3 mA / 2.0 mA
Remote output	2 mA (for remote indication)
Operating temperature range	-25°C to +70°C
Ambient humidity	0 to 95% RH
Colour	White
Material	ACS
Weight	~105 g

For information about suitable base plates, see separate document “Base matrix Salwico units”.

\*Only with SPK-2 for NOSE based detectors.

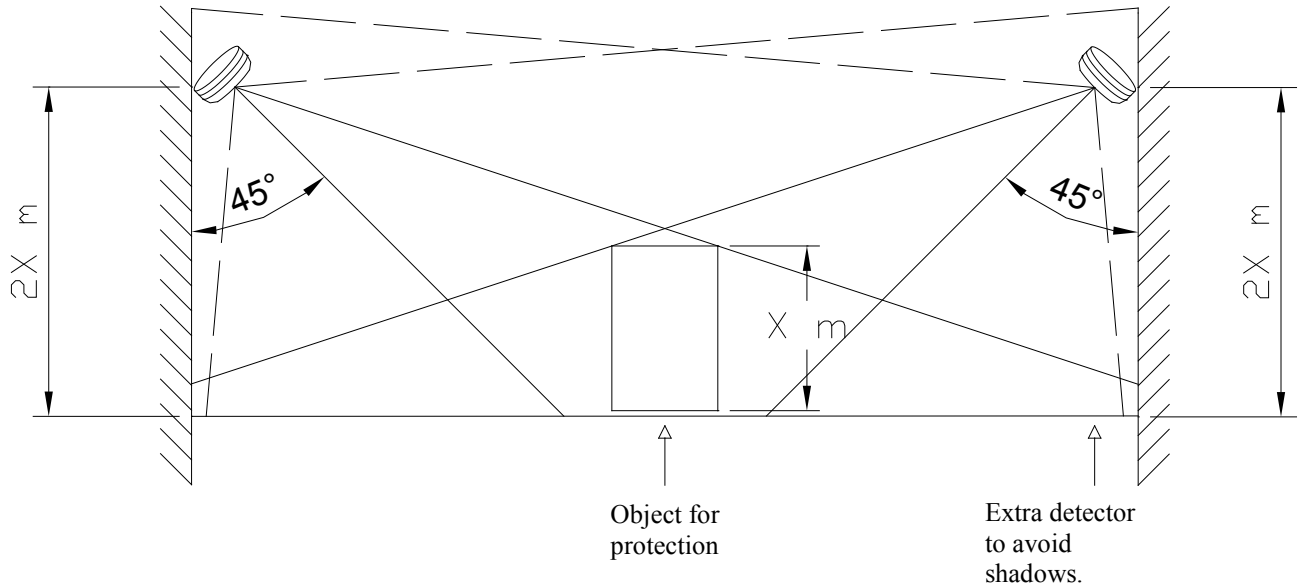
### Testing

For functional test, use UV Flame detector test lamp, part no. 001155. Due to the detectors high immunity to unwanted alarms, it is difficult to test the detector without the UV test lamp.

# UV flame detector

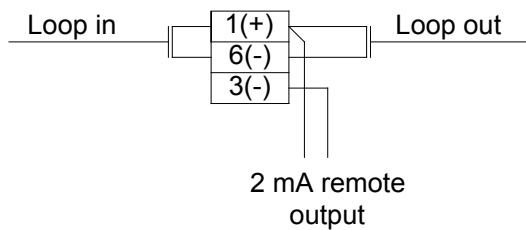
## *Salwico NS-AUV*

### Installation



**Note!** The flame detector is sensitive to and may have false alarms when exposed to Arc Welder. Avoid the detector to be exposed for Arc Welding.

### Connection



### Dimensions (mm)

